

*Training the next generation of Marine Conservationists*



## **MARINE CONSERVATION** *Courses & Programs*

CONSERVATION  DIVER **Training Center**

1 day to 8 weeks



## OUR COURSES & PROGRAMS

At Black Turtle Conservation, we offer a range of marine conservation courses developed in collaboration with Conservation Diver, PADI AWARE, and our own in-house programs. Whether you're a beginner or an experienced diver, you'll find **hands-on opportunities to contribute to real conservation efforts** while expanding your knowledge of marine ecosystems.

From learning how to monitor reef health to contributing data on endangered species, our courses combine theory, practice, and passion for the ocean. Several of our in-house programs also include participation in real research projects led by our conservation team here on Koh Tao.



**ANY LEVEL**

**COURSES**

Open to Divers & Non-Divers

- Sea Turtle Ecology & Monitoring
- Coral Watch Speciality
- Shark Ecology & Population Studies
- Plastic Pollution: Monitoring & Assessment

**PROGRAMS**

Open to Divers & Non-Divers

3 days

**CITIZEN SCIENCE**

- Coral Watch Speciality
- Citizen Science Initiatives
- Marine Ecology

**COURSES**

AOW Required

Ecological Monitoring Program (EMP)

- Coral Taxonomy & Identification
- Nudibranch & Sea Slug Ecology
- Coral Restoration Theory & Techniques
- Coral Predators Monitoring & Mgmt

- Advanced Coral Taxonomy
- Coral Disease Monitoring
- Artificial Reefs Theory

Advanced EMP

**PROGRAMS**

AOW Required

7 week

**CORE CONSERVATIONIST**

- EMP
- Coral Taxonomy I

2 weeks

**CONSERVATION SPECIALIST**

- EMP
- Coral Taxonomy I & II
- Sea Turtles
- BTD Sea Slugs

+ 2 weeks

**REEF SPECIALIST**

- Coral Restoration
- Artificial Reefs
- Coral Taxonomy III
- BTD Marine Pollution

+ 2 weeks

**MASTER CONSERVATIONIST**

- Giant Clams
- BTD Cleaning Stations
- BTD Coral Predators
- Sharks

+ 2 weeks

**SCIENTIFIC DIVER**

- Image J
- Coral Disease
- Advanced EMP

Min. 2 weeks

**RESEARCH ASSISTANT**

- Research Assistant

**ADVANCED DIVERS**

**PADI PROFESSIONAL LEVEL**

PADI Certifications

Min. 6 weeks

**CONSERVATION DIVE MASTER**

Min. 4 weeks

**CONSERVATION + PADI IDC**

**CONSERVATION DIVER INSTRUCTOR LEVEL**

Dive Master & Research Assistant Required

**CD IDC - EMP INSTRUCTOR**

EMP

**SPECIALITY INSTRUCTOR**

EMP + ≥5 courses

**MASTER INSTRUCTOR**

EMP + ≥10 courses

**INSTRUCTOR TRAINER**

**PRO**

1 day

## COURSES OPEN TO ALL LEVELS

All of these are 1-day courses and can be completed either while snorkeling, no scuba certification is required for any of these courses. However, participants must be comfortable in the water and able to swim, as practical sessions take place by snorkelling.

MOST POPULAR



### SEA TURTLE ECOLOGY & MONITORING

Learn about the ecology, behavior and threats facing sea turtles, all of which are endangered. Develop skills in turtle ID and data collection, allowing you to contribute to real conservation initiatives by recording sightings to support ongoing monitoring efforts in Koh Tao and internationally.

1 day / 1 snorkel - **6,000 ฿**



### SHARK ECOLOGY & POPULATION STUDIES

Sharks play a crucial role as apex predators, yet many species are now critically endangered. Explore their evolution, anatomy, and ecological role. Learn population monitoring techniques and how to contribute to local and global shark databases to aid conservation efforts.

1 day / 1 snorkel - **6,000 ฿**

MOST POPULAR



### CORAL WATCH

Learn how to assess coral health and contribute to a global monitoring effort using a powerful method developed by CoralWatch and supported by PADI AWARE. Gain insight into coral biology, bleaching, and climate change, while participating in real reef surveys.

1 day / 1 snorkel or 2 dives - **6,000 ฿**



### PLASTIC POLLUTION: MONITORING & ASSESSMENT

Learn about the scale and impact of plastic pollution in the ocean. Gain hands-on experience monitoring microplastics and help protect reef ecosystems by removing macroplastics.

1 day / 1 snorkel or 2 dives - **6,000 ฿**



3 days

# CITIZEN SCIENCE

The Citizen Science program is a 3-day experience designed to give you a hands-on introduction to the world of marine conservation. Perfect for beginners, this program offers a taste of what it's like to contribute to ongoing conservation efforts and understand the marine ecosystem.

Upon completion, participants will earn the PADI Coral Watch Specialty certification, making it an excellent starting point for those curious about conservation and eager to make a positive impact.

## PREREQUISITES

- **Snorkelling option:** No scuba certification required. Participants must be comfortable in the water and able to swim.
- **Diving option:** Good buoyancy control required.

## CORE MODULES

- **Coral Watch:** Learn to assess coral health using a simple yet powerful citizen science tool. You'll gain insights into the challenges corals face and how you can help monitor their condition.
- **Marine Ecology:** Dive into the basics of marine ecosystems, exploring how different species interact and the vital roles they play in maintaining ocean health. The theoretical part includes learning about marine ecology, fish, and invertebrates, providing a solid foundation for understanding underwater environments.
- **Citizen Science Initiatives:** Discover various global and local projects you can participate in, and learn how your contributions can aid scientific research and conservation efforts.

In addition to theoretical learning, this program includes an introduction to scientific diving, allowing you to apply what you've learned in a real-world setting. You'll gain valuable skills that serve as a first step into the exciting world of marine research and conservation.

## WHO IS THIS FOR?

This program is ideal for:

- Beginner divers and snorkelers curious about marine conservation.
- Anyone interested in learning how to contribute to citizen science projects.
- Individuals looking for a short, immersive introduction to the underwater world.

The Citizen Science program is more than just an introduction—it's an invitation to be part of something bigger. You'll leave with a deeper understanding of marine conservation and practical ways to get involved in protecting our oceans.

## INCLUDES:

- **4 Conservation Dives**
- **1 PADI AWARE Certification:**
  - Coral Watch Speciality

■	Dive
■	Lectures
■	Independent Project
■	Data Review
■	Snorkel
■	Extra Activities
■	Study time
■	Free time

3 DAYS		Day 1	Day 2	Day 3	
Citizen Scientist	Morning	07:00			
		09:00	Coral Watch	Study time/e-Learning	
	Lunch				
	Afternoon	12:00	Fluid Mechanics Dive	Citizen science initiatives	EMP Fish, Inverts or Substrate
		14:00	Coral Watch dive/snorkel	Data review	EMP Fish, Inverts or Substrate
	Evening	17:00			

3 days - **CITIZEN SCIENCE: 9,900 ₪**



From 4 days to 8 weeks

## COURSES FOR ADVANCED DIVERS

\* All of these courses require an Advanced Open Water certification (or equivalent) and advanced buoyancy control. To participate, students must be able to hover neutrally buoyant, maintain horizontal trim and execute a fin pivot without touching the substrate while keeping their hands free for data collection — all essential skills for scientific diving and protecting the reef ecosystems we work in.

Practical sessions take place by scuba diving. All participants are assessed on their first EMP dive, and we reserve the right to pause training if the required standard is not met.

Students with fewer than 20 logged dives must complete a pool Buoyancy Workshop beforehand (+2,000 THB).



### ECOLOGICAL MONITORING PROGRAM (EMP)

MOST POPULAR

*Prerequisite: AOW + Advanced buoyancy control\**

*The EMP is a prerequisite for most conservation courses.*

The Ecological Monitoring Program (EMP) introduces reef survey methods and scientific diving techniques. You'll learn to assess fish, invertebrates, substrate, and coral health, and report your findings to an international database.

4 days / 6 dives - 11,900 ฿



### CORAL TAXONOMY & IDENTIFICATION

*Prerequisites: AOW + EMP*

Learn to identify coral species based on skeletal and anatomical characteristics, both on land and underwater. This course builds essential skills for research, restoration, and monitoring projects.

1 day / 2 dives - 6,000 ฿



## NUDIBRANCH & SEA SLUG ECOLOGY & ID



*Prerequisites: AOW + EMP*

Dive into the world of nudibranchs and sea slugs, key indicators of reef biodiversity and water quality. In this course, you'll explore their taxonomy and ecology while participating in an ongoing research project at Black Turtle Dive, learning how to monitor and document these vibrant creatures.

1 day / 2 dives - **6,000 ₪**



## CORAL RESTORATION THEORY & TECHNIQUES

*Prerequisites: AOW + EMP*

Explore the science behind coral restoration. You'll learn about restoration strategies, site selection, coral health assessment, and attachment methods.

1 day / 2 dives - **8,000 ₪**



## ARTIFICIAL REEF THEORY & TECHNIQUES

*Prerequisites: AOW + EMP + Coral Restoration*

Artificial reefs serve multiple purposes—from restoring damaged reef structure to creating alternative dive sites. You'll learn the theory behind their design and implementation, and put your knowledge into practice by designing your own reef project as a classroom exercise.

1 day / 2 dives - **6,000 ₪**

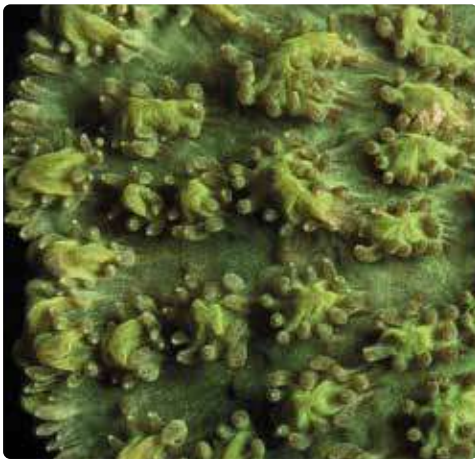


## CORAL PREDATORS: POPULATION MANAGEMENT & MONITORING

*Prerequisites: AOW + EMP*

Identify and monitor coral predators such as crown-of-thorns starfish and *Drupella* snails, and understand their impact on reef health. This course teaches practical techniques for population control and long-term reef protection.

1 day / 2 dives - **6,000 ₪**



## ADVANCED CORAL TAXONOMY

*Prerequisites: AOW + EMP + Coral Taxonomy*

Expand your coral identification skills by learning to recognize more challenging and rare genera. This course deepens your knowledge of skeletal and anatomical traits, strengthening your abilities for advanced research and monitoring.

2 day / 4 dives - **10,000 ₪**

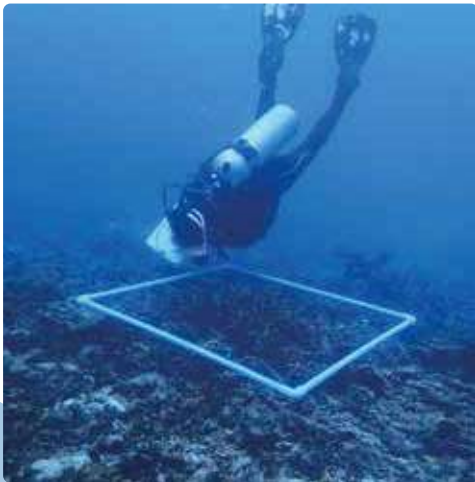


## CORAL DISEASES & COMPROMISED HEALTH

*Prerequisites: AOW + EMP + Coral Taxonomy*

Discover how to identify and record common coral diseases and signs of stress in reef ecosystems. This course equips you with the skills to assess reef health and contribute valuable data to monitoring efforts.

1 day / 2 dives - **6,000 ₪**



## ADVANCED EMP

*Prerequisites: AOW + EMP + Coral Taxonomy + Coral Disease + 3 Monitoring Courses*

Gain experience using additional monitoring techniques, including quadrats, transects, and advanced survey methods. This course enhances your ability to collect accurate data and analyze long-term changes in reef ecosystems.

1 day / 2 dives - **6,000 ₪**

## EXTRA PRACTICE DIVES

Participants have the opportunity to **add extra dives** after completing the courses **with one of our conservation instructors**, allowing you to **continue your learning and further practice the techniques you've learned**.

These additional dives are a great way to consolidate your knowledge, build confidence underwater, and contribute even more valuable data to ongoing conservation projects.

2 dives: **2,500 ₪**

4 dives: **4,500 ₪**

6 dives: **6,500 ₪**

An underwater photograph showing a group of divers in a blue ocean. They are gathered around a large, white, cylindrical structure that looks like a piece of marine equipment or a buoy. Bubbles are rising from the divers, and the water is clear. The scene is brightly lit, suggesting a shallow depth.

From 1 to 8 weeks

# OUR PROGRAMS

Our marine conservation programs run **from 1 to 8 weeks** and are **designed for anyone passionate about the ocean**—whether you want to learn more about marine conservation, make a positive impact, or are an experienced marine biologist looking to gain advanced skills in monitoring, research, and specialised knowledge.

Each program includes both a Black Turtle Conservation diploma and multiple Conservation Diver certifications, making them ideal for those who want to grow their CV and experience towards a career in conservation.

## BUOYANCY REQUIREMENTS

**Advanced buoyancy control is essential for scientific diving.** All participants are assessed on their first EMP dive, and **we reserve the right to ask students to complete additional buoyancy training before continuing** — to protect both the learning experience and the reefs we work in.

*\* A Buoyancy Workshop — pool session with our conservation instructors - is mandatory for students with fewer than 20 logged dives. Available as an optional add-on for anyone wanting to sharpen their technique before working in sensitive reef environments (+2,000 THB).*

A photograph of two divers in a coral reef environment. One diver is in the foreground, looking down at a clipboard, while the other is slightly behind and to the right. The reef is covered in brown and orange coral, and the water is clear. A dark blue banner with white text is overlaid at the bottom of the image.

1 week

# CORE CONSERVATIONIST

Embark on a transformative journey into the world of marine conservation with our Core Conservationist Program. This 1-week intensive course combines hands-on experience, engaging theoretical sessions, and practical applications.

Whether you're taking your first steps into the world of conservation or looking to expand your understanding of marine ecosystems, this program is the perfect starting point.

Designed for beginners and diving enthusiasts alike, this program equips you with essential skills to monitor marine ecosystems, identify key species, and analyze ecological data within a supportive and inspiring environment.

## CORE MODULES

- **Ecological Monitoring Program (EMP):** Master the foundational techniques needed to assess marine ecosystems. Learn to identify fish, invertebrates, and substrate types, and gain a solid understanding of how to collect reliable data for conservation purposes.
- **Coral Taxonomy & Identification I:** Dive into the incredible diversity of coral species, exploring their roles in marine ecosystems, and learn the basics of coral identification through engaging lectures and guided dives.
- **Data Review and Analysis:** Learn how to organize, interpret, and present the ecological data you collect, turning raw information into actionable insights that support conservation initiatives.

## ADDITIONAL DIVES INCLUDED

- **Reef Safari Dives:** Apply your skills while exploring and observing the incredible biodiversity of marine ecosystems.
- **Assessment Dives:** Refine your techniques and gain valuable feedback in a practical learning environment.

This program isn't just an introduction to marine conservation—it's your gateway to making a real impact on our oceans. Whether you're just starting your conservation journey or looking to expand your diving skills, the Core Conservationist Program offers a unique opportunity to learn, grow, and make a difference.

Join us for a week of discovery, diving, and dedication to ocean conservation!

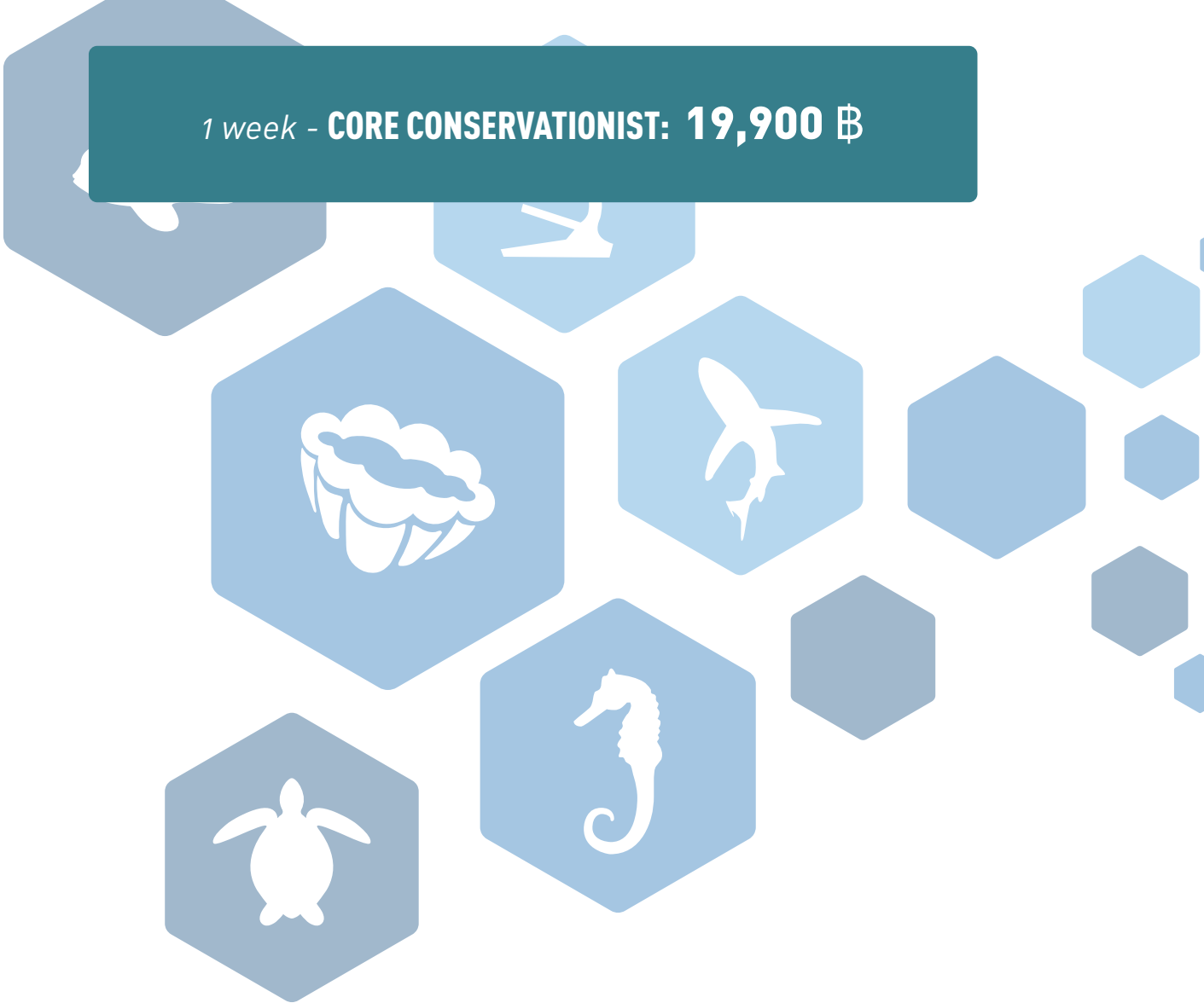
**INCLUDES:**

- **10 Conservation Dives**
- **2 Conservation Diver Certifications:**
  - Ecological Monitoring Program (EMP)
  - Coral Taxonomy & Identification

Dive
Lectures
Independent Project
Data Review
Snorkel
Extra Activities
Study time
Free time

Core Conservationist	WEEK 1		Day 1	Day 2	Day 3	Day 4	Day 5	Day 6	Day 7
	Morning	07:00							
	09:00	Marine Ecology Lecture	EMP Inverts Lecture	Study time/e-Learning	EMP Substrate Lecture	Coral Taxonomy Lecture	Study time/e-Learning	Data review	
Lunch									
Afternoon	12:00	Fluid Mechanics Dive	EMP Fish Lecture	EMP Fish Dive	Substrate Safari Dive	Tax Safari Dive	Assesment Tax dive	Data review	
	14:00	Reef Safari Dive	Study time/e-Learning	EMP Inverts Dive	EMP Substrate Dive	Tax Safari Dive	Assesment EMP dive		
Evening	17:00			Debrief	Debrief	Debrief	Debrief	Exams / Questions	

1 week - **CORE CONSERVATIONIST: 19,900 ₪**





2 weeks

# CONSERVATION SPECIALIST

MOST  
POPULAR

Discover the world of marine conservation with our Conservation Specialist program, a 2-week course designed to broaden your understanding of marine ecosystems, build practical skills, and provide you with the opportunity to pursue your own research interests.

This program is an alternative to our Core Conservationist program, so there's no need to complete both. Simply choose the one that fits your schedule and goals—Conservation Specialist is perfect for those with two weeks available who want a more in-depth and research-focused experience.

## CORE MODULES

- **Ecological Monitoring Program (EMP):** Comprehensive training in fish, invertebrate, and substrate monitoring.
- **Coral Taxonomy & Identification I & II:** Gain a deeper understanding of coral species, their taxonomy, and ecological significance.
- **BTD Sea Slugs:** Explore the fascinating diversity of sea slugs, their behavior, and their importance in marine ecosystems. As this is an in-house course, you'll have the unique opportunity to participate in real research projects we are conducting, contributing directly to ongoing studies.
- **Sea Turtles Ecology & Monitoring:** Learn about the biology, behavior, and conservation of these iconic marine creatures.

## INDEPENDENT PROJECT

One of the highlights of this program is the Independent Project, where you'll have the chance to lead a conservation-focused initiative of your choice. Whether it's creating educational materials, developing conservation strategies, or exploring a specific research question, you'll work closely with our team to design and implement a project that aligns with your interests and contributes to meaningful marine conservation efforts.

## ADDITIONAL DIVES INCLUDED

- **Reef and Safari Dives:** Apply what you've learned while observing marine life in its natural habitat.
- **Assessment Dives:** Refine your skills and receive feedback to ensure you're confident and prepared.

This program is ideal for anyone interested in conservation, whether you're taking your first steps into the field or looking to deepen your understanding of marine ecosystems. It's also a great way to experience the camaraderie and support of a like-minded community.

Join us for two weeks of diving, learning, and personal growth, and become an active contributor to marine conservation efforts!

**INCLUDES:**

- **14 Conservation Dives**
- **3 Conservation Diver Certification:**
  - Ecological Monitoring Program
  - Coral Taxonomy & Identification
  - Sea Turtles Ecology & Monitoring
- **1 Black Turtle Dive (BTD) Certification:**
  - BTD Sea Slugs

Dive
Lectures
Independent Project
Data Review
Snorkel
Extra Activities
Study time
Free time

Conservation Specialist	WEEK 1								
		Day 1	Day 2	Day 3	Day 4	Day 5	Day 6	Day 7	
	Morning	07:00							
		09:00	Marine Ecology Lecture	Study time/e-Learning	Study time/e-Learning	EMP Substrate Lecture		Coral Taxonomy Lecture	Study time/e-Learning
	Lunch								
	Afternoon	12:00	Fluid Mechanics Dive	EMP Inverts Lecture	EMP Fish Dive	Substrate Safari Dive		Tax Safari Dive	Independent project
		14:00	Reef Safari Dive	EMP Fish Lecture	EMP Inverts Dive	EMP Substrate Dive		Tax Safari Dive	
	Evening	17:00	Debrief		Debrief	Debrief		Debrief	
	WEEK 2								
		Day 8	Day 9	Day 10	Day 11	Day 12	Day 13	Day 14	
Morning	07:00			Sea Slugs Dive					
	09:00	Independent project	BTD Sea Slugs Lecture	Sea Slugs Dive		Study time/e-Learning	Coral Taxonomy II Lecture	Sea Slugs Data review	
Lunch									
Afternoon	12:00	Assesment Tax dive	EMP Data review	Independent project		Independent project	Tax Safari II	Independent project presentation	
	14:00	Assesment EMP dive				Sea Turtles	Tax Safari II		
Evening	17:00	Debrief				Turtle Snorkel	Debrief	Questions	

2 weeks - **CONSERVATION SPECIALIST: 33,000 ₪**



A photograph of two divers underwater near a large, spherical artificial reef structure. The structure is made of a metal frame with coral growing on it. Bubbles are visible around the divers. The background is a clear blue ocean.

4 weeks

# REEF SPECIALIST

(\* Completion of the Conservation Specialist program is a prerequisite for this course.)

Take your marine conservation knowledge further with our Reef Specialist program, a 2-week advanced course designed to build upon the skills and knowledge gained in the Conservation Specialist program. This course focuses on reef restoration, marine pollution, and artificial reef projects, while continuing to refine your practical skills and research capabilities.

## CORE MODULES

- **BTD Marine Pollution:** Understand the causes, impacts, and mitigation of marine pollution, with a focus on practical assessment and monitoring techniques.
- **Coral Taxonomy & Identification III:** Expand your knowledge of coral species, focusing on advanced identification and ecological roles within reef systems.
- **Coral Restoration Theory & Techniques:** Gain hands-on experience in coral restoration, exploring techniques such as site preparation, attachment methods, and monitoring to support reef recovery efforts.
- **Artificial Reefs Theory & Techniques:** Learn about the design, planning, and ecological benefits of artificial reefs. As part of this module, you'll create your own artificial reef design project as a practical exercise, allowing you to apply your knowledge and develop innovative solutions for supporting reef ecosystems in a simulated context.

## INDEPENDENT PROJECT

Build upon the foundation of your Independent Project from the Conservation Specialist program by delving further into your chosen topic. This phase allows you to expand your initial work, explore new angles, and produce tangible results, whether through research, educational initiatives, or innovative conservation strategies.

## ADDITIONAL DIVES INCLUDED

- **Practice and Application:** These additional dives are designed to help you solidify your understanding of marine ecosystems and scientific methods. You'll have the opportunity to refine your skills, apply conservation techniques, and process the knowledge gained throughout the course in a practical underwater setting.

This program is ideal for those passionate about reef conservation and restoration, providing you with the advanced tools and experience to make a tangible impact. Join a team of like-minded conservationists, deepen your expertise, and become an active participant in the restoration of marine ecosystems.

**INCLUDES:**

- **12 Conservation Dives**
- **3 Conservation Diver Certification:**
  - Coral Restoration Theory & Techniques
  - Artificial Reef Theory & Techniques
  - Advanced Coral Taxonomy & Identification
- **1 Black Turtle Dive (BTD) Certification:**
  - BTD Marine Pollution

Dive
Lectures
Independent Project
Data Review
Snorkel
Extra Activities
Study time
Free time

		WEEK 3		Day 15	Day 16	Day 17	Day 18	Day 19	Day 20	Day 21	
Reef Specialist	Morning	07:00									
		09:00	BTD Marine Pollution			Coral Taxonomy III Lecture	Tax review	Study time/e-Learning		Independent project	
	Lunch										
	Afternoon	12:00	DAD dive			Tax Safari III	Tax Safari (all)		Independent project		EMP dives
		14:00	Data review			Tax Safari III	Tax Safari (all)				EMP dives
	Evening	17:00				Debrief	Debrief			Debrief	
			WEEK 4		Day 22	Day 23	Day 24	Day 25	Day 26	Day 27	Day 28
	Morning	07:00							AR Dive		
		09:00	Restoration Lecture	Restoration Monitoring			Artificial Reef Lecture	AR Dive	Independent project	AR Project Presentation	
	Lunch										
	Afternoon	12:00	Restoration Techniques	Data review			AR Dive	Data review	Independent project	Independent project Presentation	
		14:00					AR Design Project			Questions	
Evening	17:00	Debrief									

+ 2 weeks - **REEF SPECIALIST: 30.000 ₺**

**4 WEEKS PACK**

Conservation Specialist + Reef Specialist:

~~63,000 ₺~~ **60,000 ₺**

\* The offer applies when the full pack is reserved at the time of booking.



6 weeks

# MASTER CONSERVATIONIST

(\* Completion of the Conservation Specialist and Reef Specialist programs is a prerequisite for this course.)

Take your marine conservation journey to the highest level with our Master Conservationist program, a 2-week expert-level course designed for those who have completed the Conservation Specialist and Reef Specialist programs.

This program combines advanced scientific training with participation in cutting-edge research projects, offering a comprehensive understanding of marine ecosystems and the skills needed to contribute meaningfully to conservation efforts.

## CORE MODULES

- **Giant Clams:** Dive into the biology, behavior, and ecological importance of giant clams while participating in in-house research aimed at understanding and protecting these remarkable species.
- **BTD Cleaning Interactions:** Explore the fascinating relationships between cleaning organisms and their hosts, contributing to our ongoing research on this crucial ecological behavior.
- **BTD Coral Predators: Population Management & Monitoring:** Study the impact of coral predators on reef health, learning to identify species and assess their effects on coral ecosystems.
- **Sharks Ecology & Population Studies:** Gain insight into the ecology, behavior, and conservation of sharks, including their critical role in maintaining the balance of marine ecosystems.

## INDEPENDENT PROJECT

Take your Independent Project to the next level by incorporating advanced techniques and a more in-depth focus on your chosen topic. This stage provides the opportunity to refine your work, apply specialized methodologies, and produce impactful outcomes that support marine conservation efforts, whether through research, education, or practical applications.

## ADDITIONAL DIVES INCLUDED

- **Practice and Research:** The six additional dives are designed to provide opportunities for further research and practice. You'll apply scientific methods, conservation techniques, and the advanced knowledge gained throughout the program, allowing you to consolidate your skills in real-world settings.

This program represents the pinnacle of marine conservation training at Black Turtle Dive, offering unparalleled opportunities to participate in in-house research projects and gain expert-level skills. Join us to deepen your expertise, contribute to impactful conservation work, and become a leader in protecting marine ecosystems.

**INCLUDES:**

- **12 Conservation Dives**
- **2 Conservation Diver Certification:**
  - Giant Clams
  - Sharks Ecology & Population Studies
- **2 Black Turtle Dive (BTD) Certifications:**
  - BTD Coral Predator: Population management & Monitoring
  - BTD Cleaning Interactions

Dive
Lectures
Independent Project
Data Review
Snorkel
Extra Activities
Study time
Free time

		WEEK 5		Day 30	Day 31	Day 32	Day 33	Day 34	Day 35	Day 36	
<b>Master Conservationist</b>	Morning	07:00									
		09:00		BTD Giant clams	Independent project	Data review		BTD Cleaning interactions	Data review		
	Lunch										
	Afternoon	12:00		Giant clams survey	EMP dives	Study time/e-Learning			Cleaning stations survey	Research dive	
		14:00		Giant clams survey	EMP dives				Cleaning stations survey	Research dive	
	Evening	17:00		Debrief	Debrief				Debrief	Debrief	
			WEEK 6		Day 37	Day 38	Day 39	Day 40	Day 41	Day 42	Day 43
	Morning	07:00						Shark survey			
		09:00		Coral Predators		Independent project			Independent project	Independent project	Independent project Presentation
	Lunch										
	Afternoon	12:00		Predators survey		Sharks	Data review		Research dive	Independent project	Exams / Personal Development Session
14:00			Predators survey		Shark survey preparation			Research dive			
Evening	17:00		Debrief					Debrief			

+ 2 weeks - **MASTER CONSERVATIONIST: 30,000 ₪**

**6 WEEKS PACK**

Conservation Specialist + Reef Specialist + Master Conservationist:  
~~93,000 ₪~~ **88,000 ₪**  
 \* The offer applies when the full pack is reserved at the time of booking.



8 weeks

# SCIENTIFIC DIVER

(\* Completion of the Conservation Specialist, Reef Specialist and Master Conservationist programs is a prerequisite for this course.)

The Scientific Diver program is the final stage of our comprehensive conservation training at Black Turtle Dive. This 2-week advanced course is designed for participants who have successfully completed the Conservation Specialist, Reef Specialist, and Master Conservationist programs.

This program focuses on advanced research methods, scientific diving techniques, and the completion of your Independent Project, preparing you for professional roles in marine research and conservation.

## CORE MODULES

- **ImageJ for Marine Research:** Learn to use ImageJ, a powerful software for image analysis, to quantify and assess marine habitats, coral health, and ecological changes.
- **Coral Diseases & Compromised Health:** Gain expertise in identifying and assessing coral diseases, understanding their causes, and evaluating their impact on reef ecosystems.
- **Advanced EMP Diver:** Enhance your skills in ecological monitoring with advanced EMP techniques, focusing on precision data collection and analysis for long-term reef health assessments.

## INDEPENDENT PROJECT

This program is dedicated to bringing your Independent Project to its conclusion. You'll concentrate on refining your work, synthesizing your results, and delivering a polished outcome that showcases your contributions to marine conservation, whether through research, education, or practical applications.

## ADDITIONAL DIVES INCLUDED

- **Seven Advanced Dives:** These dives are dedicated to applying your scientific diving skills, conducting research, and refining your techniques. They are designed to support the completion of your project and consolidate your expertise in real-world scenarios.

The Scientific Diver program is the culmination of our conservation pathway, offering the skills and experience needed to transition into professional roles in marine research and conservation.

With hands-on training in advanced methods and the opportunity to finalize your independent research, this course ensures you're fully prepared to make a meaningful impact in marine conservation.

**INCLUDES:**

- **11 Conservation Dives**
- **3 Conservation Diver Certification:**
  - Image J
  - Coral Diseases & Compromised Health
  - Advanced EMP Diver



Dive
Lectures
Independent Project
Data Review
Snorkel
Extra Activities
Study time
Free time

		WEEK 7		Day 44	Day 45	Day 46	Day 47	Day 48	Day 49	Day 50	
Scientific Diver	Morning	07:00									
		09:00		Image J	Study time/e-Learning	Coral Disease Lecture	Independent project	EMP Advanced Survey Techniques	Data review		
	Lunch										
	Afternoon	12:00									
		14:00		Image J practice	Research dive	Disease Safari	Independent project	Advanced EMP Dive	Image J practice		
	Evening	17:00									
				Debrief	Debrief	Debrief		Debrief	Research dive		
			WEEK 8		Day 51	Day 52	Day 53	Day 54	Day 55	Day 56	Day 57
	Morning	07:00				Research dive					
		09:00		Study time/e-Learning	Research dive	Independent project	Independent project	Independent project	Independent project	Independent project	Presentation
	Lunch										
	Afternoon	12:00			EMP dives	Independent project	Independent project	Independent project	Independent project	Independent project	Exams / Personal Development Session
14:00				EMP dives							
Evening	17:00			Debrief							

+ 2 weeks - **SCIENTIFIC DIVER: 30.000 ₺**

**8 WEEKS PACK**

*Conservation Specialist + Reef Specialist  
+ Master Conservationist + Scientific Diver:*

~~123,000 ₺~~ **115,000 ₺**

\* The offer applies when the full pack is reserved at the time of booking.



From 2 weeks

# RESEARCH ASSISTANT

(\* Completion of the Conservation Specialist, Reef Specialist, Master Conservationist & Scientific Diver programs is a prerequisite for this course. Dive Master Level Required.)

The Research Assistant recognition is the **highest achievement a student can attain within the Conservation Diver training pathway**. Unlike a traditional course, this certification represents a milestone: the transition from student to active team member. It is awarded to those who have demonstrated exceptional dedication, consistency, and passion for marine conservation.

This program is designed for participants who have completed all of our previous conservation programs and hold a Divemaster certification. As a Research Assistant, **you step into a more professional role**—supporting real conservation operations, gaining leadership experience, and contributing directly to long-term research projects.

For those considering a future career in marine conservation, this is one of the most valuable steps you can take. The Research Assistant experience **provides the practical skills, field experience, and team integration needed to understand how conservation projects truly operate**. It is also a prerequisite for anyone wishing to become a Conservation Diver Instructor.

## CORE RESPONSIBILITIES

As a Research Assistant, you will actively support and contribute to ongoing conservation and research initiatives, including:

- Supporting and sometimes **leading weekly monitoring surveys** (sea slugs, COTs, coral restoration follow-up, turtles, sharks, EMP, and other projects).
- **Assisting** and informally supervising new students during training dives.
- Preparing, maintaining, and organising conservation equipment.
- Helping facilitate learning activities and group discussions.
- Assisting on the boat with equipment setup, student support, and safety checks.
- **Entering and managing data** from surveys and research dives.
- Managing Beach Clean-Ups and Dive Against Debris sessions, contributing to local and global databases.
- Completing an **independent conservation or research project**.

## UNLIMITED DIVES INCLUDED

Research Assistants receive **unlimited conservation and fun dives**, giving them the freedom to:

- Lead and join surveys
- Assist instructors in the water
- Conduct their independent project
- Refine buoyancy, navigation, and scientific diving skills
- Gain leadership experience in real underwater scenarios

This immersion helps build the confidence and autonomy expected from someone preparing for a professional pathway.

## THE RESEARCH ASSISTANT EXPERIENCE

The Research Assistant role is the final step of our conservation training pathway—marking the shift from learning to actively contributing. **You will gain first-hand experience in how conservation logistics, surveys, student support, and research operations are managed on a daily basis.**

By the end of the program, you will not only have expanded your scientific diving and research abilities, but you will also have acquired the professional skills, field experience, and confidence needed to pursue a career in marine conservation or continue toward becoming a Conservation Diver Instructor.

## INCLUDES:

- **Unlimited Conservation Dives**
- **1 Conservation Diver Certification:**
  - Research Assistant

**8.000 ₺ / week**

*\* Minimum of 2 weeks*

### WEEKS PACK

4 weeks: ~~32,000 ₺~~  
**30,000 ₺**

6 weeks: ~~48,000 ₺~~  
**44,000 ₺**

*\* The offer applies when the full pack is reserved at the time of booking.*



From 6 weeks

## PRO LEVEL

If you're training to become a dive professional and want to build your career on a strong foundation of ocean awareness, our PADI Pro + Conservation pathway is the perfect fit. This option combines two weeks of hands-on marine conservation training with either the PADI Divemaster program or the PADI IDC.

It's a unique opportunity to integrate conservation into your professional development, learn how marine ecosystems work, and get involved in real projects while you train to become a dive pro.

By pairing professional training with conservation experience, you'll become not only a skilled diver—but a responsible, informed, and conservation-minded instructor or Divemaster ready to inspire others underwater.

### MINIMUM REQUIREMENTS

***All Conservation Dive Master candidates must have a minimum of 40 logged dives before starting the program and be Rescue Divers.***



8 weeks

# CONSERVATION DIVE MASTER

MOST  
POPULAR

Take your professional diving career to the next level with our Conservation Dive Master, a comprehensive 8-week pathway that combines the full PADI Divemaster program with 4 weeks of intensive marine conservation training. This unique route is **designed for passionate divers who want to become professional dive leaders while actively contributing to reef protection**, ecological monitoring, and community-focused conservation efforts.

The Conservation Dive Master is perfect for those who want to integrate conservation into their day-to-day professional training—learning how marine ecosystems function, gaining hands-on experience in real conservation and outreach projects, and developing the leadership skills needed to guide others responsibly underwater. Throughout the program, you'll be mentored by experienced PADI Instructors, Conservation Diver Instructors, and marine scientists in a professional, supportive environment.

**All programs start on the 1st and 16th of every month**, with a structured eight-week schedule that progresses from professional-level Divemaster training and real-world experience during the first four weeks into foundational marine conservation.

## CORE MODULES

### DIVE MASTER DEVELOPMENT (4 weeks)

You begin with the full PADI Divemaster curriculum while actively contributing to conservation work from day one. Throughout this phase you will:

- **Complete all Divemaster** theory, workshops, water skills, and leadership assessments.
- Train all skills **neutrally buoyant**, ensuring best practice for sensitive reef environments.
- Take part in our Fluid Mechanics Buoyancy Clinics and the REACT reef ecology workshops.
- **Assist instructors on PADI courses and conservation courses and initiatives**, supporting students in class and in the water.

With **unlimited fun dives during a 8-week training period**, you'll have plenty of opportunities to refine your skills, explore local dive sites, and build the comfort and confidence expected from a future dive pro. This combined pathway prepares you to become not just a Divemaster, but a conservation-minded leader capable of inspiring responsible diving practices and integrating reef protection into everyday dive operations.

## CONSERVATION SPECIALIST (4 weeks)

After your Divemaster training, you move into four weeks of conservation-focused training, where you'll:

- **Learn ecological monitoring** through the Ecological Monitoring Program (EMP), including fish, invertebrate, and substrate surveys.
- **Deepen your understanding of coral species** with Coral Taxonomy & Identification I & II, learning to assess reef health and recognise compromised conditions.
- **Explore sea slug biodiversity** through our in-house BTD Sea Slugs ecology & monitoring project, contributing sightings to our ongoing studies.
- **Study Sea Turtle Ecology & Monitoring**, combining theory with a snorkel trip to observe turtles in the wild and practice non-intrusive monitoring techniques.
- **Join at least 10 conservation surveys, finishing the program by leading two:**
  - 1 snorkel survey (e.g., turtles or sharks)
  - 1 diving survey (e.g., sea slugs, COTs, restoration or EMP)

Throughout this phase, **you'll take part in our long-term research initiatives and complete your Independent Project**, building a strong ecological and scientific foundation.

## INDEPENDENT PROJECT

As part of the conservation component, you'll complete an Independent Project where **you take the lead on a conservation-focused initiative** of your choice. This could be:

- A **research-focused project** (e.g. sea slug diversity, coral health, turtle or shark observations, plastics).
- An **education or communication project** (blog posts, social media campaign, school workshop, marine life ID guide, educational game).
- A **community engagement initiative** (cleanup events, conservation training for dive pros, etc.).

You'll work alongside our team to design, execute, analyse, and present your project, creating a meaningful piece of work that reflects your interests and contributes to real marine conservation.

## INCLUDES:

- **Unlimited Conservation Dives** (Valid for a period of 8 weeks)
- **3 Conservation Diver Certification:**
  - Ecological Monitoring Program
  - Coral Taxonomy & Identification
  - Sea Turtles Ecology & Monitoring
- **1 Black Turtle Dive (BTD) Certification:**
  - BTD Sea Slugs
- **PADI Dive Master Certification**
- **BTD Conservation Dive Master Certification**

This program is perfect for divers who want to pursue a professional diving career while making a real impact on marine conservation. You'll earn your Divemaster qualification, gain hands-on research experience, and become part of a community dedicated to protecting Koh Tao's reefs. By the end, you'll be a confident dive professional with strong knowledge of marine ecology, monitoring techniques, and conservation best practices.

WEEK 1		Day 1	Day 2	Day 3	Day 4	Day 5	Day 6	Day 7
Morning	07:00							
	09:00		DM Workshops - Boat Mechanics/Buoyancy Workshop	DM Workshops - PADI Skills Circuit / Rescue Assessment	DM Workshops - PADI Skills Circuit / Rescue Assessment	DM Workshops - Discover Local Diving / Dive Theory	DM Workshops - Discover Local Diving / Deep Scenario	
Lunch								
Afternoon	12:00	DM Workshops - Orientation	DM Workshops - Boat Mechanics/Buoyancy Workshop	DM Workshops - PADI Skills Circuit / Rescue Assessment	DM Workshops - PADI Skills Circuit / Rescue Assessment	DM Workshops - Discover Local Diving / Dive Theory	DM Workshops - Discover Local Diving / Deep Scenario	
	14:00							
Evening	17:00							Week 1 Review - 1hr
WEEK 2		Day 8	Day 9	Day 10	Day 11	Day 12	Day 13	Day 14
Morning	07:00					Conservation for dive professionals	BTD Monitoring (fish, insects)	
	09:00		DM Workshops - Discover Scuba Diving (Confined Water)	DM Workshops - Discover Scuba Diving (Open Water)	DM Workshops - Search and Recovery	Intro to Coral Tax + compromised health	Citizen science initiatives	
Lunch								
Afternoon	12:00		DM Workshops - Discover Scuba Diving (Confined Water) / Skin Diver	DM Workshops - Discover Scuba Diving (Open Water) / Rebreather Program	DM Workshops - Search and Recovery	Coral Safari (Tax)	DMP (Bull)	
	14:00					Restoration Project Maintenance	(EMP Insects)	
Evening	17:00	Turtle Survey - 3.5hr				Debrief	Debrief	Week 2 Review - 1hr
WEEK 3		Day 15	Day 16	Day 17	Day 18	Day 19	Day 20	Day 21
Morning	07:00		Assist - OW			Sea slug Survey - 1hr	Assist - ACW/Rescue	Assist - ACW/Rescue
	09:00			Assist - OW	Assist - OW			
Lunch								
Afternoon	12:00		Assist - OW	Assist - OW	Assist - OW		Assist - ACW/Rescue	Assist - ACW/Rescue
	14:00							
Evening	17:00	Turtle Survey - 3.5hr						Week 3 Review - 1hr
WEEK 4		Day 22	Day 23	Day 24	Day 25	Day 26	Day 27	Day 28
Morning	07:00		DM Workshops - Mapping Project	DM Workshops - Mapping Project	DM Workshops - Shadows		DM Workshops - Final Leads	
	09:00							
Lunch								
Afternoon	12:00					DM Workshops - Shadows		
	14:00							
Evening	17:00	Turtle Survey - 3.5hr	Shark Survey - 3.5hr					Week 4 Review - 1hr
WEEK 5		Day 29	Day 30	Day 31	Day 32	Day 33	Day 34	Day 35
Morning	07:00							
	09:00	Study time/Learning	EMP Fish Lecture	Study time/Learning	EMP Substrate Lecture		Coral Taxonomy Lecture	Independent project
Lunch								
Afternoon	12:00	Marine Ecology Lecture	Boat Mechanics Dive	EMP Fish Dive	Substrate Inflat Dive		Tax Inflat Dive	Assessment Tax Dive
	14:00	EMP Insects Lecture	Reef Safari Dive	EMP Insects Dive	EMP Substrate Dive		Tax Safari Dive	Assessment EMP Dive
Evening	17:00	Turtle Survey - 3.5hr	Debrief	Debrief	Debrief		Debrief	Week 5 Review
WEEK 6		Day 36	Day 37	Day 38	Day 39	Day 40	Day 41	Day 42
Morning	07:00					Sea slug Survey - 1hr		
	09:00	Study time/Learning	Independent project	BTD Sea Slug Lecture	Coral Taxonomy II Lecture		Independent project	Independent project
Lunch								
Afternoon	12:00	Independent project I	Independent project	Sea slug Dive	Tax Safari II		Independent project	Independent project
	14:00	Sea Turtles		Sea Slug Dive	Tax Safari II			Questions
Evening	17:00	Turtle Inflat	Shark Survey - 3hr	Debrief	Debrief			Week 6 Review - 1hr
WEEK 7		Day 43	Day 44	Day 45	Day 46	Day 47	Day 48	Day 49
Morning	07:00							
	09:00		Assist - EMP		Assist - EMP		Assist - Coral Tax I	
Lunch								
Afternoon	12:00		Assist - EMP	Assist - EMP	Assist - EMP	Sea slug Survey - 1hr	Assist - Coral Tax I	
	14:00							
Evening	17:00	Turtle Survey - 3.5hr						Week 7 Review
WEEK 8		Day 50	Day 51	Day 52	Day 53	Day 54	Day 55	Day 56
Morning	07:00							
	09:00							
Lunch								
Afternoon	12:00							Independent professional portfolio contribution
	14:00	Lead / Assist Turtle Survey	Lead / Assist Shark Survey		Lead / Assist COT Survey	Lead / Assist Sea Slug Survey		Questions
Evening	17:00	Turtle Survey - 3.5hr	Shark Survey - 3hr		COT Survey - 1hr			Week 8 Review

\* This schedule is an example and may vary depending on conditions and course logistics.

8 weeks - **CONSERVATION DIVE MASTER: 88,900 ₱**

Rescue + Conservation Dive Master: **102,900 ₱**

Advanced Open Water + Rescue + Conservation Dive Master: **110,900 ₱**

Open Water + Adv.OW + Rescue + Conservation Dive Master: **119,900 ₱**



# CONSERVATION SURVEYS

*Join our Conservation Team and make every dive count!*

Looking for a meaningful way to contribute to marine conservation in Koh Tao?

**Joining our surveys is a great way to take part in real projects** and make a difference by helping collect data that supports long-term marine conservation efforts.

## SEA SLUGS & CROWN OF THORNS

*Contribute to coral reef research by monitoring sea slugs diversity or coral predators populations.*

### Dive-based surveys include:

- ✓ Conservation expert guide
- ✓ 2 guided conservation dives
- ✓ Intro to monitoring & species ID
- ✓ Diving equipment & dive computer
- ✓ Dive insurance
- ✓ Refreshments & fruit on the boat

**2,200 ฿**

## SHARKS & TURTLES

*Support shark or turtle conservation by monitoring local populations and contribute to their protection.*

### Snorkel-based surveys include:

- ✓ Conservation expert guide
- ✓ 1 guided conservation snorkel
- ✓ Intro to monitoring & species ID
- ✓ All needed gear included
- ✓ Transportation & entrance to the site

**600 ฿**



# BEACH CLEAN UPS & DIVE AGAINST DEBRIS

*every Sunday*

At Black Turtle Conservation, we are deeply committed to protecting the ocean—both above and below the surface. This commitment is part of our daily work, but it also extends to the community.

That's why, on Sundays, we organise either **Beach Clean Ups** or **Dive Against Debris surveys**. These events bring together divers, non-divers, locals, and visitors to take direct action against marine pollution.

By removing debris from our beaches and reefs and recording what we find, we contribute valuable data to both global databases and our own long-term research ones, helping researchers and conservationists understand and tackle this issue worldwide. It's a simple but powerful way to give back to the ocean we all love.

# WANT TO DIVE INTO MARINE CONSERVATION?

Take your passion for the ocean to the next level!  
Join our hands-on courses and **discover how you can protect marine life**, monitor reef health, and contribute to real conservation efforts—no experience needed.



Scan the QR  
to know more!



CONSERVATION  **DiVER** Training Center